

RBEP25/30 + RBEPLBC110/145/180

Tool holder + Cutter bar 110/145/180 cm

Micro tractor 15 - 35 HP with PTO = 540 tr/min

Poids tracteur mini = 660-900 kg.

Working width cutter bar 110, 145 and 180cm – Rear linkage 3 points cat.1 or 2.

Horizontal reach to tractor of 2.5m and 3m.

Retractable blade length 48 thickness 4.

Delivered with cardan shaft ASAE 1 3/8" – 6 splines.

Cable control, with 1 bidirectional control.

Tanc 65L, Pump group 2 : 17cc+4.5cc, motor plate group 2 : 12cc.

The advantages :

Rotors with 2 retractable knives: to secure the cut if vegetation is too rough. Overlapping cut of 4.5 cm between rotors for a perfect cut.

Hydraulic moteur equipped with a unidirection flap for 1 rotation direction- vitesse des rotors élevée : rotation at 2900 tr/min, representing a cutting speed of 60m/s for a perfect cut and crush

Rotor bearing in European quality

Belt drive type Poly V : permet un entraînement de haute adhérence et sans galet tendeur (tension réglée d'usine).

Closed frame with large opening: designed especially for lateral movements and to protect the bearings from grass jam and projections.

Large opening: allows to swallow the vegetation without flatten avoiding projection risks.

Tôlearrière à fond plat : permet destabiliser le plateau pendant l'avancement du tracteur.

Patin latéral renforcé Hardox ép. 8mm : permet de suivre le terrain en position verticale tout en protégeant le châssis.

Flancs de châssis avec repère de hauteur : permet de surveiller la hauteur de coupe pendant l'avancement du tracteur.

Crushing head: Articulation of 186°.


Safety cylinder: the exterior arms and the crushing head can move aside in a collision.

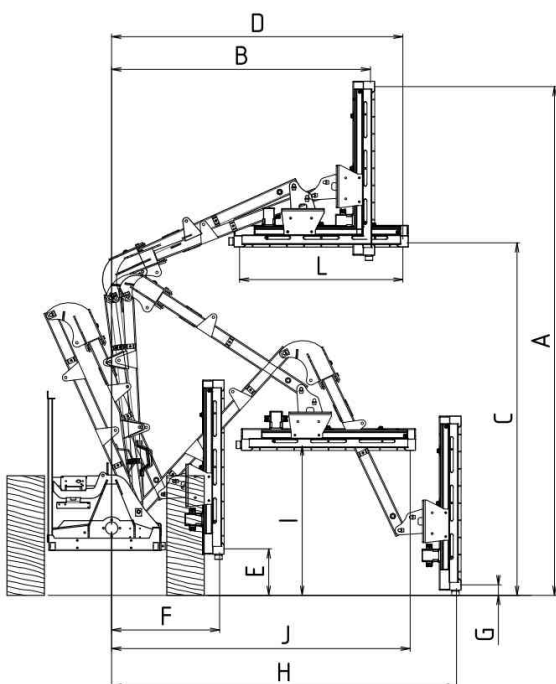
Locking rod : blocks the arms and the crushing head in transport position with simple broaching.

Bidirectionnel control : to control simultanément le bras intérieur et extérieur de la machine.

Security, ergonomy: Front shield, front/rear rubber flaps anti-spitting. Safety cylinder to avoid obstacles.

Lubrication accessibles from all bearings and articulations without demounting.

References	Working width Cm	PTO Speed Tr/min		Weight Kg	TRACTOR		
					HP	Minimum Weight (Kg)	Minimum outside of wheels
RBEP25+RBEPLBC110	110	540*	3 x 2	312	15/30	660	1.10 m
RBEP25+RBEPLBC145	145	540*	4 x 2	323	20/30	660	1.20 m
RBEP30+RBEPLBC110	110	540*	3 x 2	322	20/30	900	1.20 m
RBEP30+RBEPLBC145	145	540*	4 x 2	333	25/35	900	1.30 m
RBEP30+RBEPLBC180	180	540*	5 x 2	344	25/35	900	1.30 m



	RBEP25 + RBEPLBC110	RBEP25 + RBEPLBC145	RBEP30 + RBEPLBC110	RBEP30 + RBEPLBC145	RBEP30 + RBEPLBC180
L (m)	1,10	1,45	1,10	1,45	1,80
A (m)	3,30	3,65	3,70	4,05	4,39
B (m)	0,80	0,80	0,80	0,80	0,80
C (m)	2,00	2,00	2,40	2,40	2,40
D (m)	1,70	2,05	1,90	2,25	2,59
E (m)	0,31	0,31	0,31	0,31	0,31
F (m)	0,70	0,70	0,70	0,70	0,70
G (m)	0,07	0,07	0,07	0,07	0,07
H (m)	1,59	1,59	1,71	1,71	1,71
I* (m)	1,00	1,00	1,00	1,00	1,00
J* (m)	1,21	1,56	1,65	2,00	2,34

* Indicative dimensions for bush of 1m height

Options :

Linkage stabilizer with 2 adjustable push bars, 3° point multi coupling and fixing axis

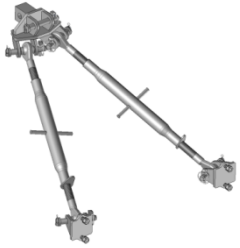
Options :

Linkage stabilizer (RBEPLSTAB) with 2 adjustable push bars, 3° point multi coupling and fixing axis

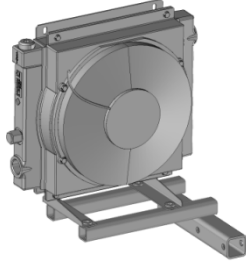
Heat exchanger (RBEPLRH) with exchanger, fixation kit and hydraulic connection

Counter weight 60 kg (RBEPLM60) with 5 hefts of 12kg each and support

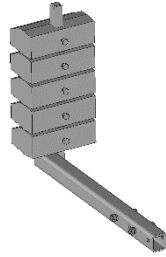
Boomerang knives kit (BCKCB110/145/180) with 3/4/5 knives



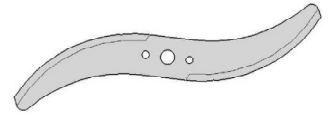
Linkage stabilizer



Heat exchanger

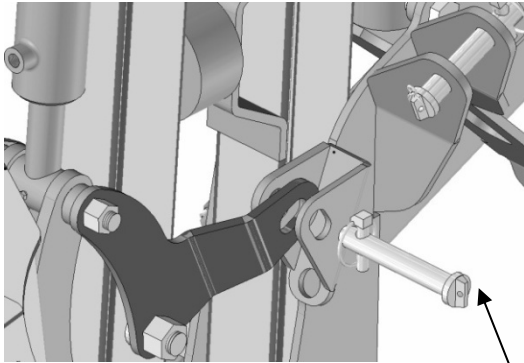


Counter weight 60



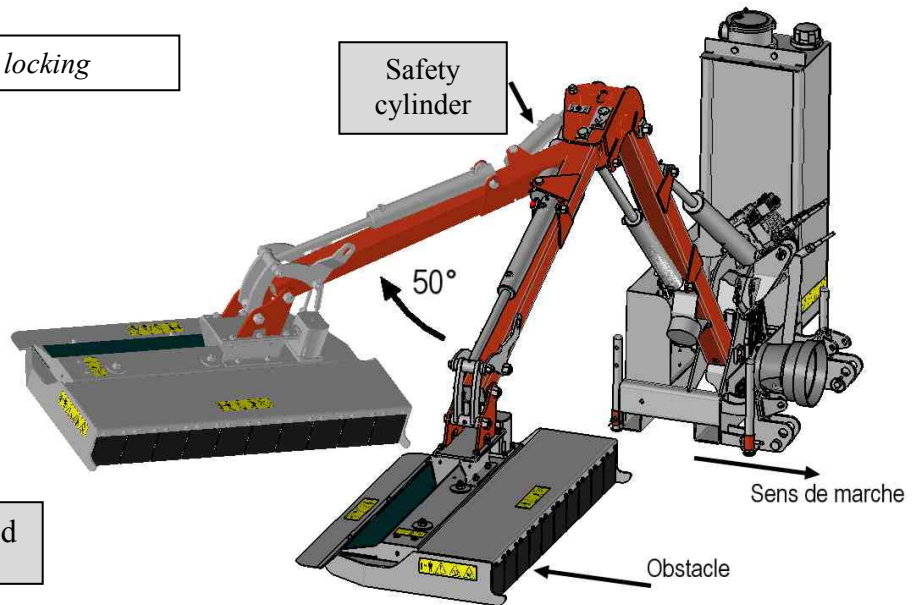
« Boomerang » knives

Transport position locking



Locking rod

Repère hauteur de coupe

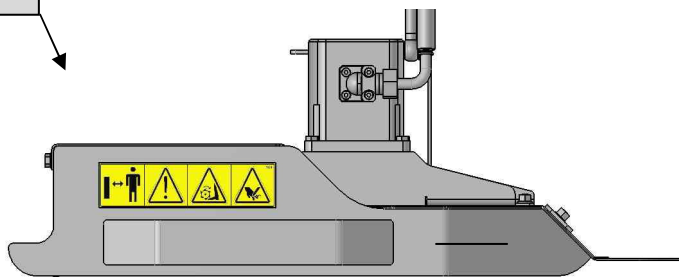


Safety cylinder

50°

Sens de marche

Obstacle



Cutter bar
Rotation 186°

Attention
Position flottante
à proscrire

Fond plat stabilisateur

